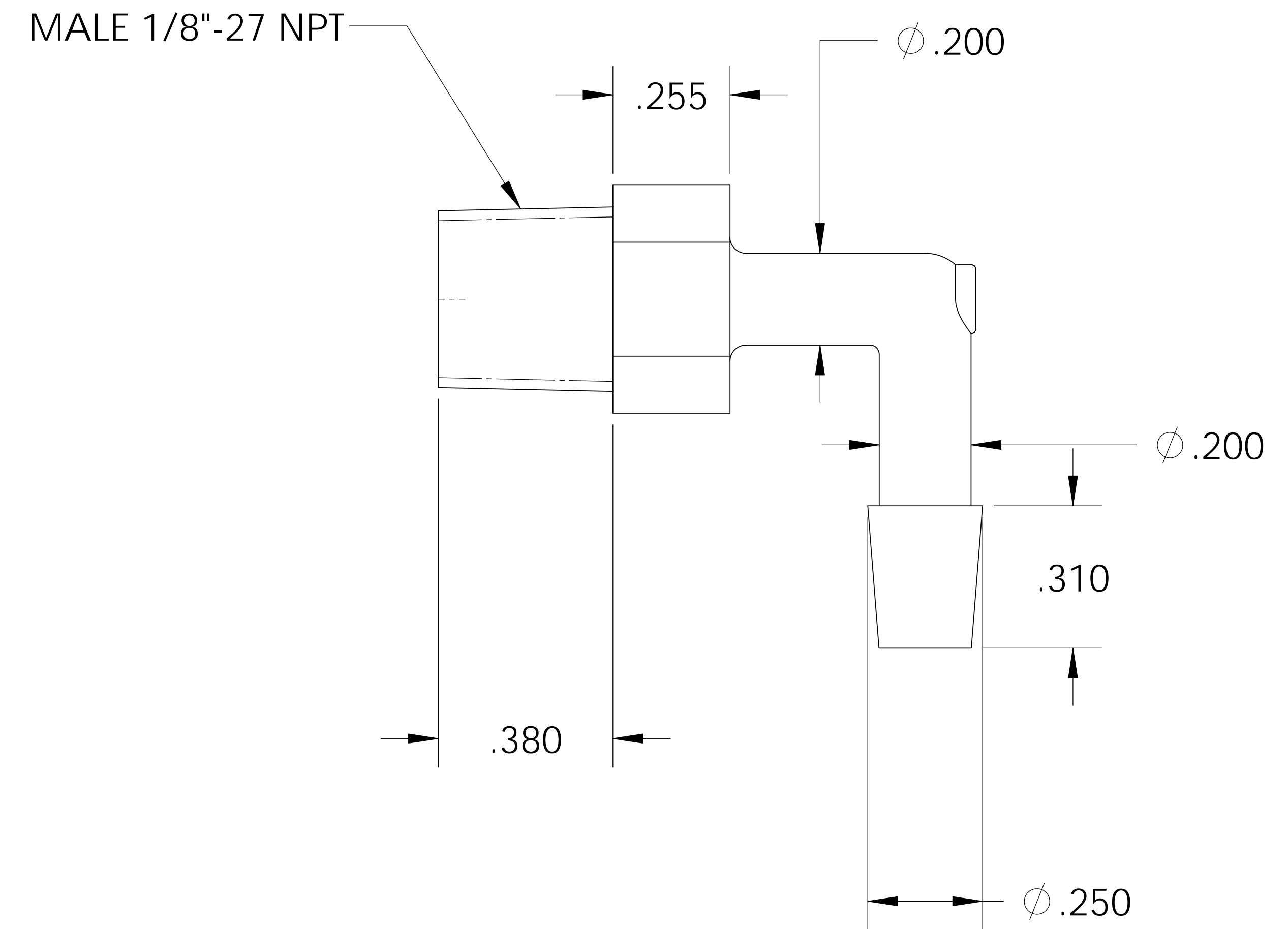
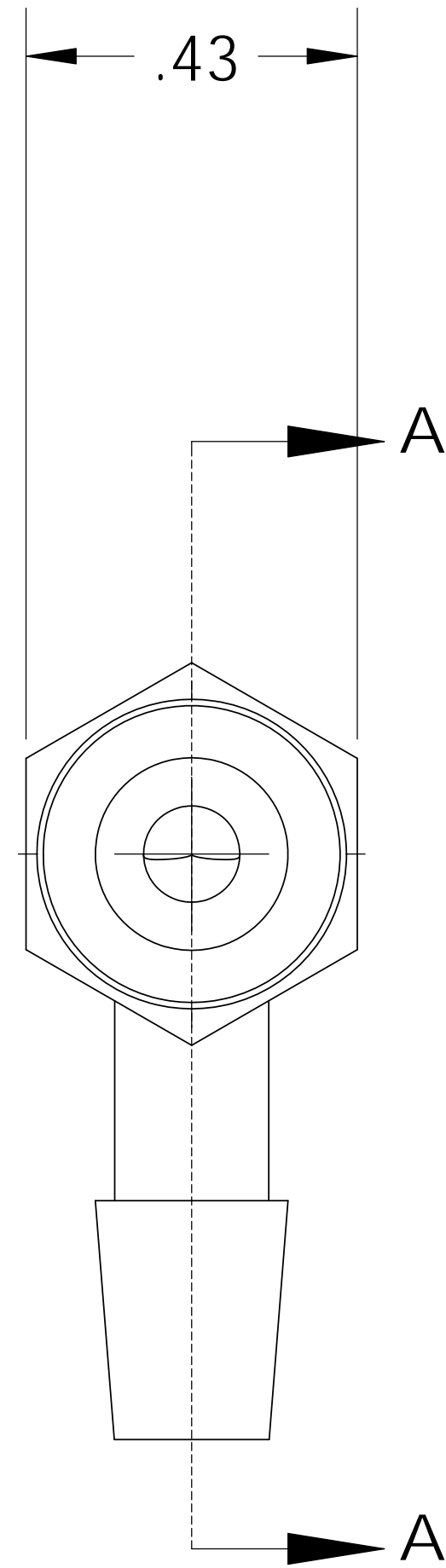


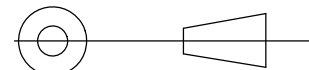

SECTION A-A



NOTES:

- 1) NYLON HAS COLOR OPTIONS:  
BLACK = TE2023/BN  
NATURAL = TE2023/N

**PROPRIETARY AND CONFIDENTIAL**  
THE INFORMATION CONTAINED IN THIS  
DRAWING IS THE SOLE PROPERTY OF  
THOGUS PRODUCTS COMPANY. ANY  
REPRODUCTION IN PART OR AS A WHOLE  
WITHOUT THE WRITTEN PERMISSION OF  
THOGUS PRODUCTS COMPANY IS  
PROHIBITED.

C	95.00065	CONVERTED TO 3D FORMAT	UNLESS OTHERWISE SPECIFIED: DIMENSIONS ARE IN INCHES TOLERANCES: ANGULAR: ±0.5° X.X = ± 0.1 X.XX = ± 0.05 X.XXX = ± 0.015 REMOVE ALL SHARP EDGES AND BURRS BLEND ALL RADII TO 0.01IN INTERPRET GEOMETRIC TOLERANCING PER: ANSI Y 14.5 1994 MATERIAL: N FINISH: NA THIRD ANGLE PROJECTION: 	DRAWN	NAME JRM	DATE 04/07/11	<div><b>Thogus</b> <small>You think it, we can make it...</small></div> <div>33490 PIN OAK, AVON LAKE, OH 44012</div> <div>TITLE: 1/8" NPT X 3/16" BARB ELBOW</div> <div><div>SIZE B</div><div>DWG. NO. TE2023/N</div><div>REV C</div></div> <div>SCALE: 2:1</div> <div>MASS:</div> <div>SHEET 1 OF 1</div>		
				CHECKED	KDJ	04/07/11			
				ENG APPR.		XX/XX/XX			
				MFG APPR.		XX/XX/XX			
				Q.A.		XX/XX/XX			
				COMMENTS:					
REV	WRO#	DESCRIPTION	HISTORY	DO NOT SCALE DRAWING					